



CSF-21001



CSF-22007



CSF-21002



CSF-21003



CSF-22002



CSF-22003



CSF-21004



CSF-21005



CSF-22004



CSF-22005



CSF-21007



CSF-21008



CSF-22009



CSF-22010



CSF-23009



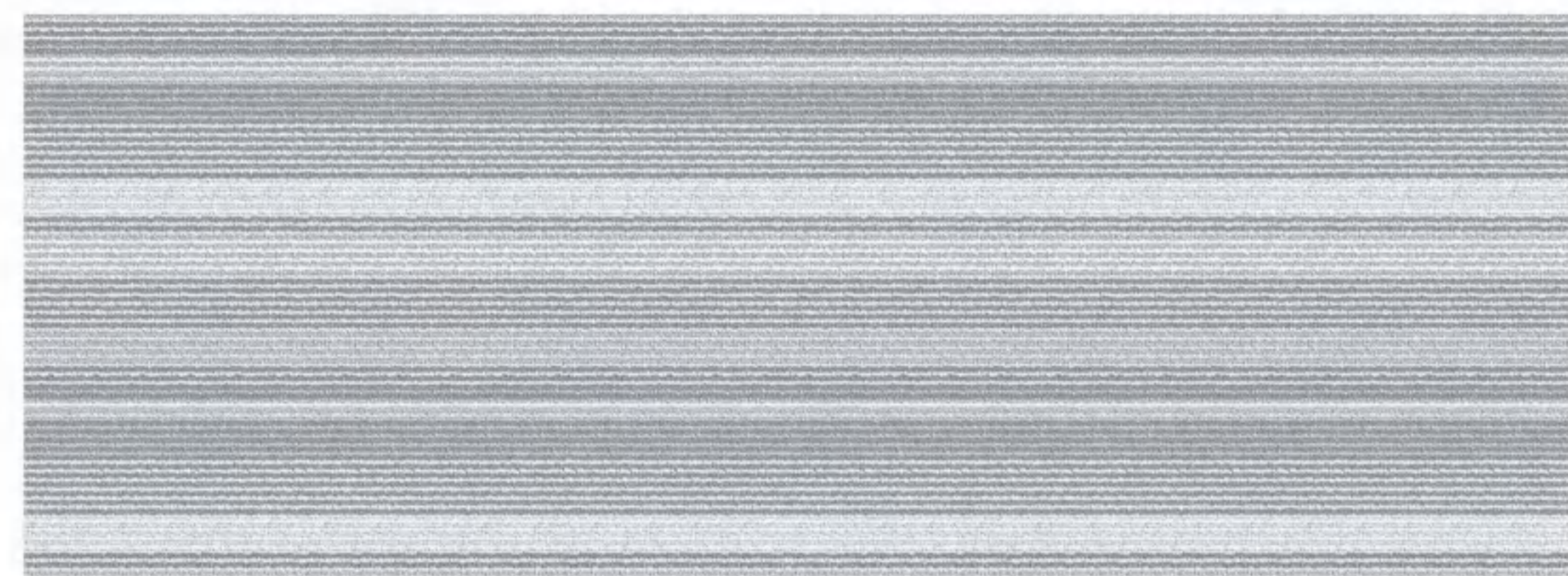
CSF-23001



CSF-23002



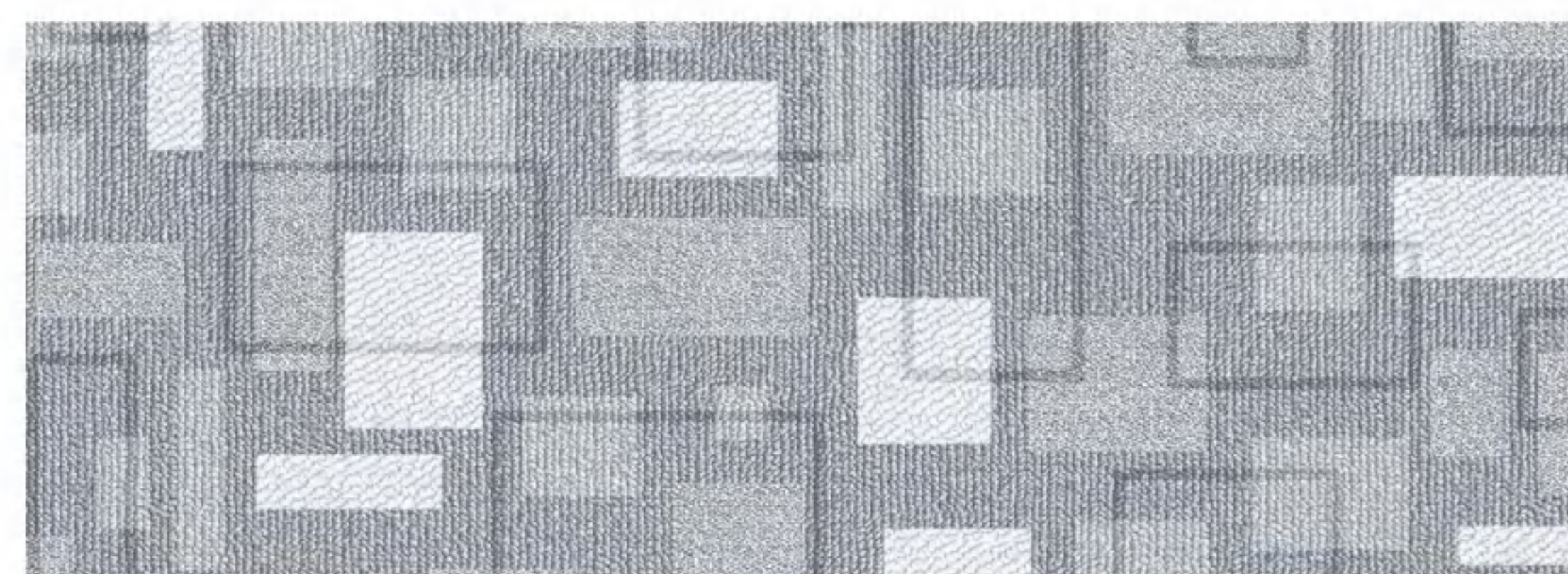
CSF-23003



CSF-23004



CSF-23005



CSF-23007



Deep Wood



Plain Lines(Crystal Line)



Slate(stone)



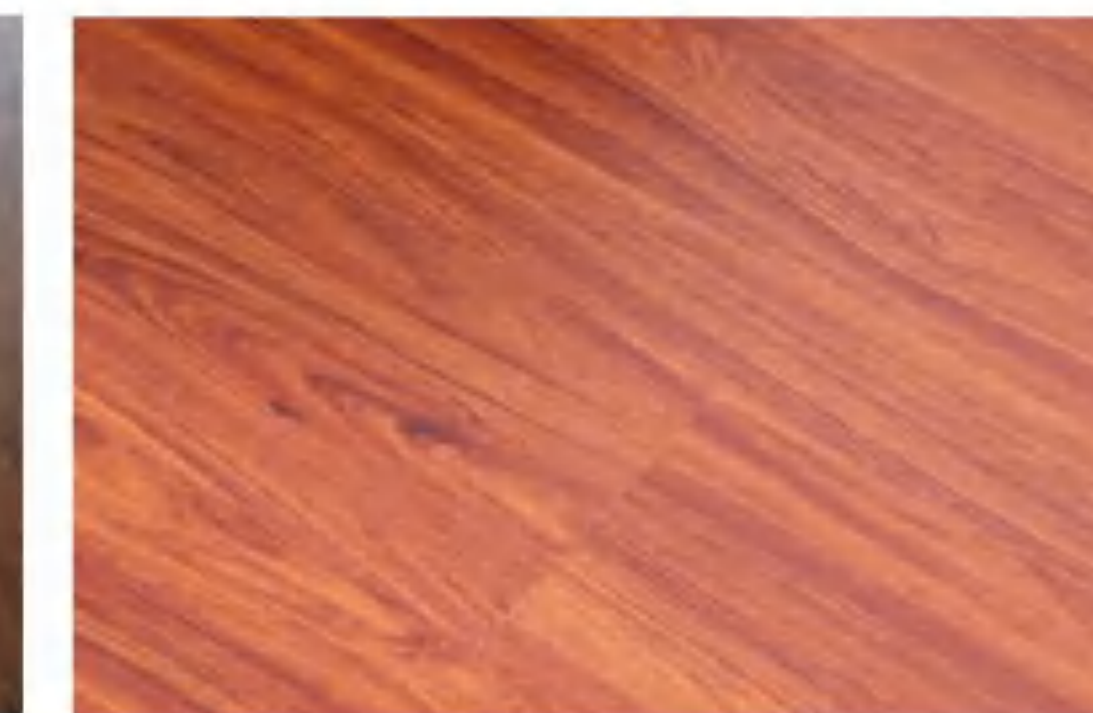
Orange Peel(coralline)



Carpet Texture



Hand-Scraped(knife chop)



Flat grain



Plain Skin

Types



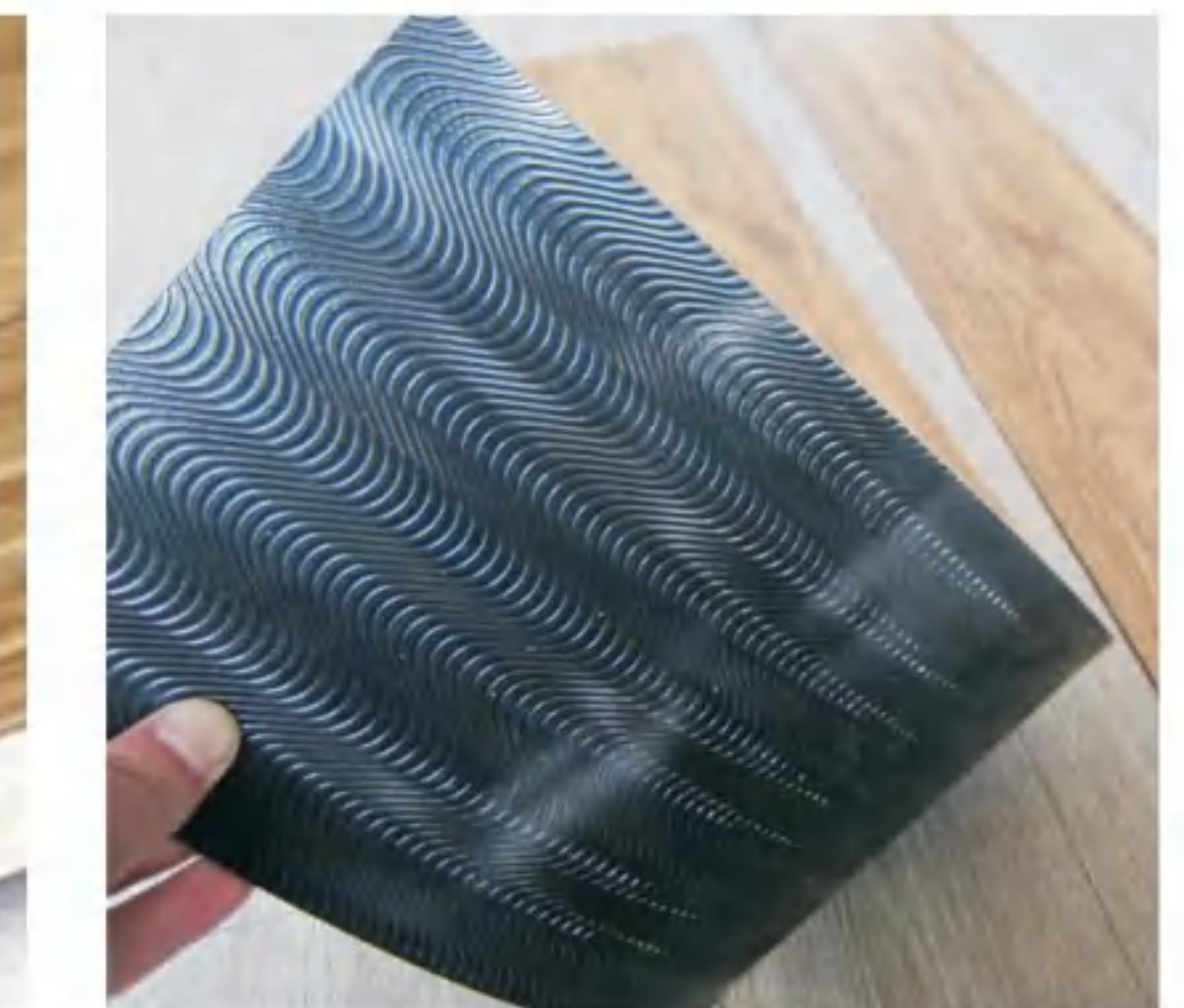
Self-Adhesive



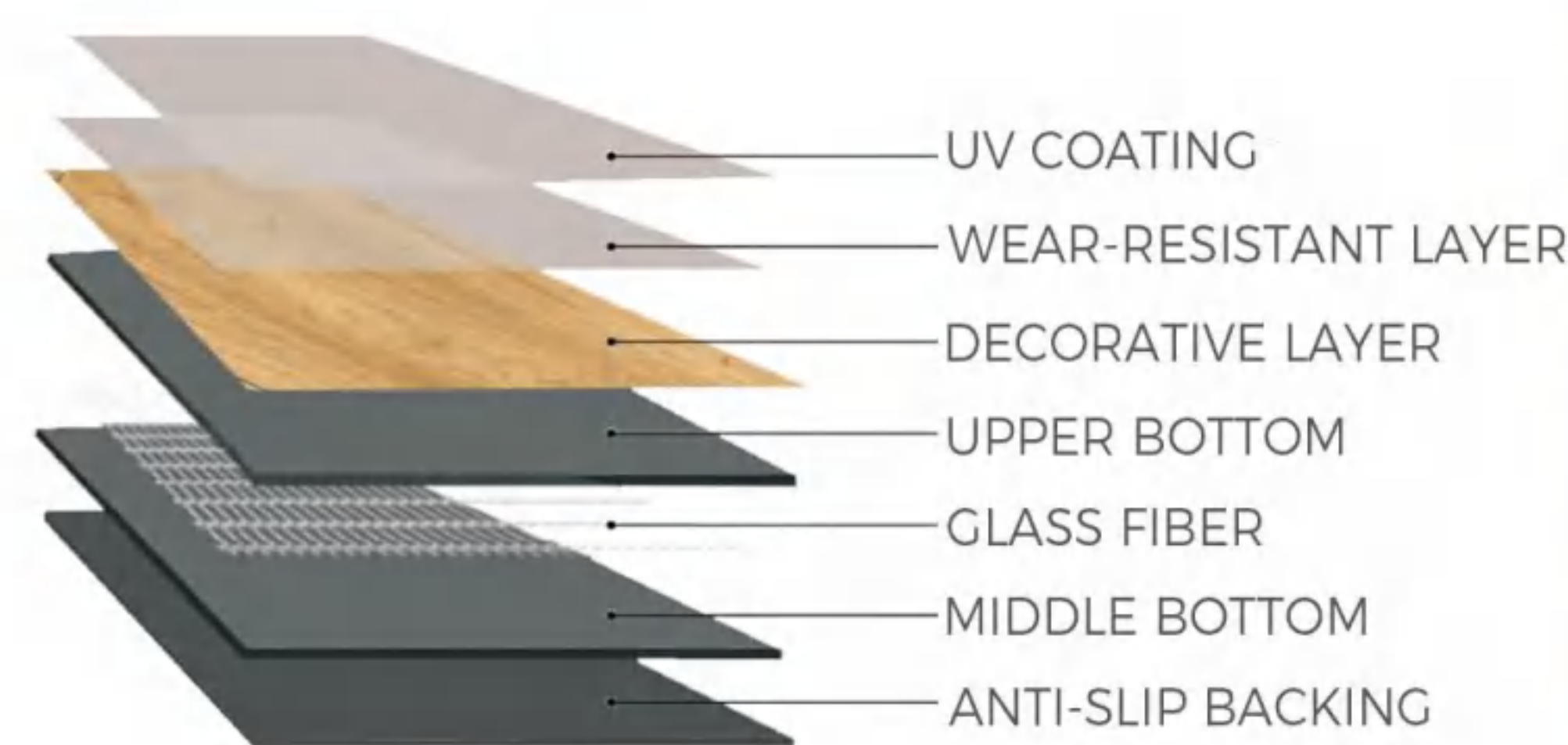
Dry Back



Click



Loose Lay



3'x24" 76.2mmx609.6mm	3'x12" 76.2mmx304.8mm
3'x48" 76.2mmx1219.2mm	
6'x36" 152.4mmx914.4mm	
6'x48" 152.4mmx1219.2mm	
7.2'x36" 183mmx915mm	
7'x48" 177.8mmx1219.2mm	
9'x36" 228.6mmx914.4mm	
9'x48" 228.6mmx1219.2mm	

12'x12" 304.8mmx304.8mm	12'x18" 304.8mmx457.2mm
12'x24" 304.8mmx609.6mm	
18'x36" 457.2mmx914.4mm	
18'x18" 457.2mmx457.2mm	24'x24" 609.6mmx609.6mm
9'x9" 224mmx224mm	10'x10" 250mmx250mm



CSF-31001



CSF-32007



CSF-31002



CSF-31003



CSF-32001



CSF-32002



CSF-31004



CSF-31006



CSF-32003



CSF-32004



CSF-31008



CSF-31009



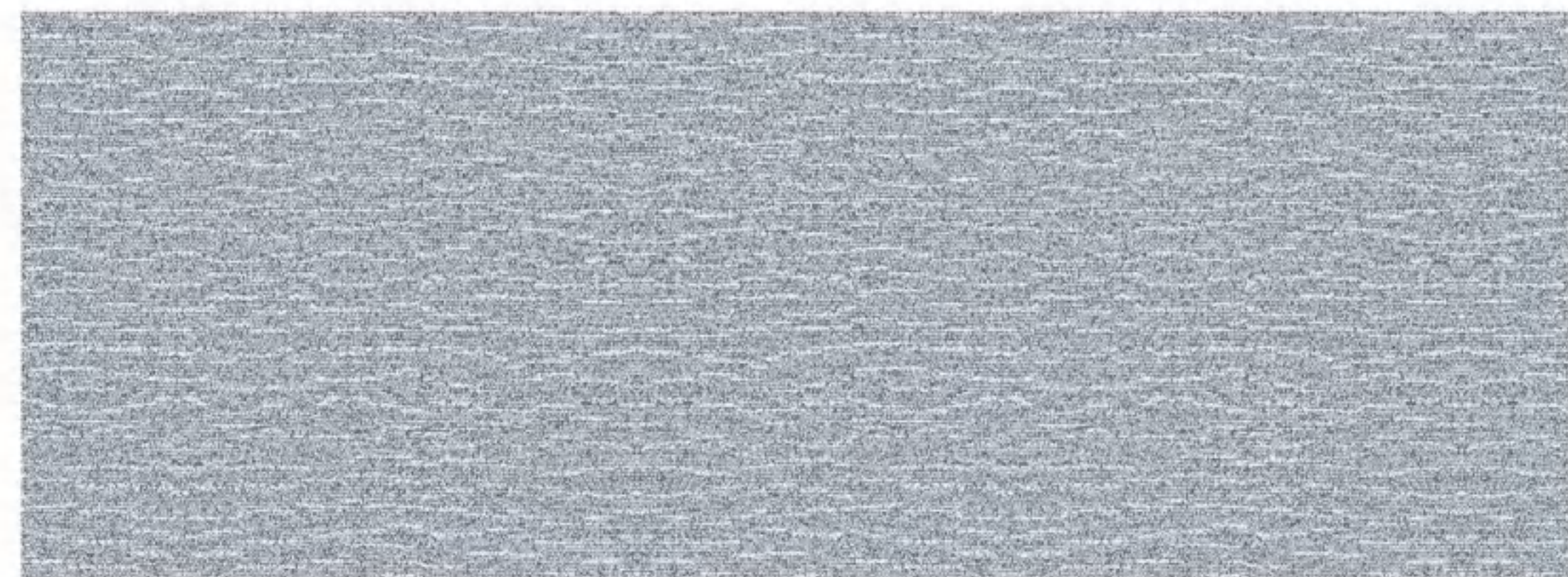
CSF-32005



CSF-32006



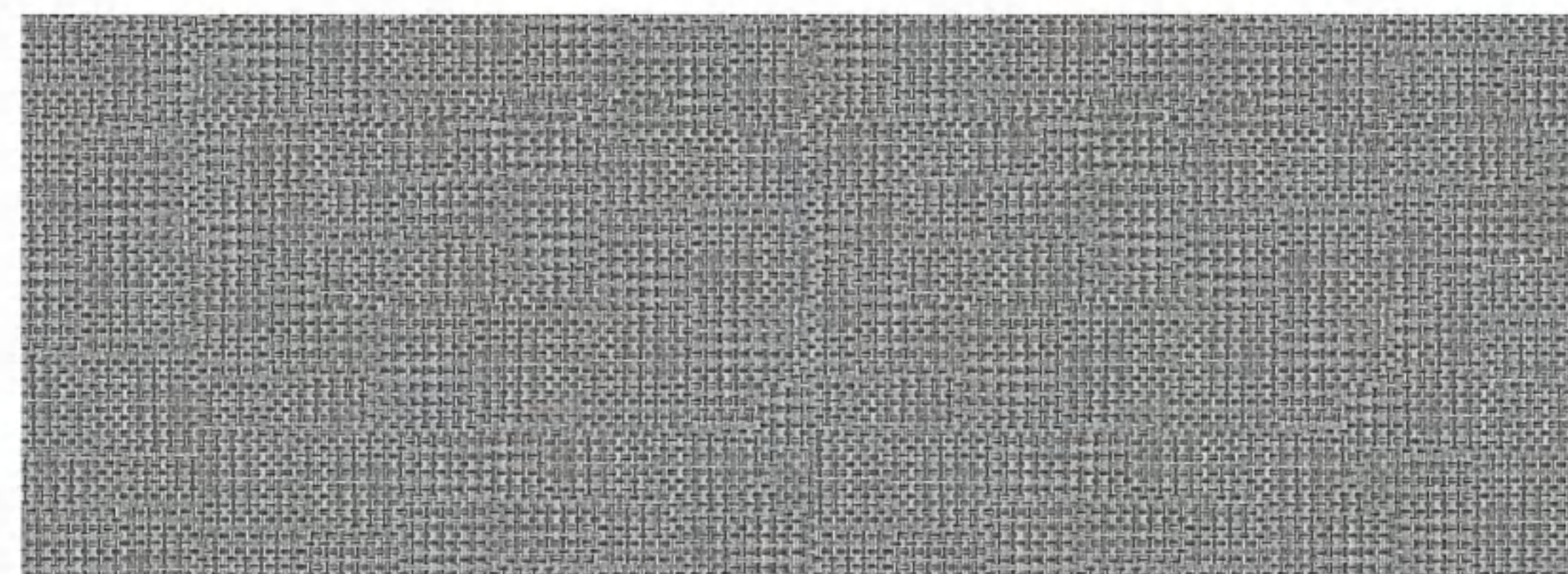
CSF-33001



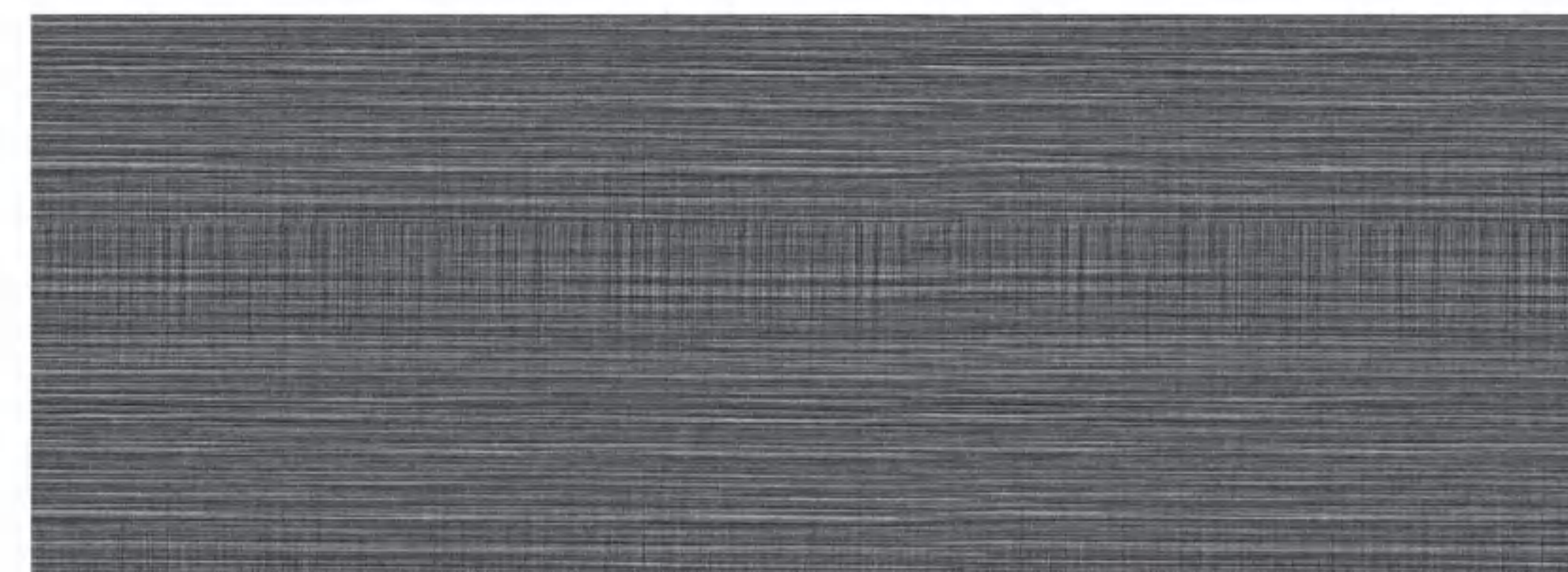
CSF-33003



CSF-33005



CSF-33006



CSF-33008



CSF-33010



CSF-33011

• The advantage of stone plastic floor

SPC flooring environmental performance is much better than that of laminate flooring, no formaldehyde emission; its material is recyclable and environment. SPC flooring provides superior water & erosion resistance let you install especially in high moisture areas, including bathrooms, kitchens, basement and laundry rooms, it is ideal choices for residential use. it is fire retardant and with high heat resistance compared with solid wood or laminated flooring.

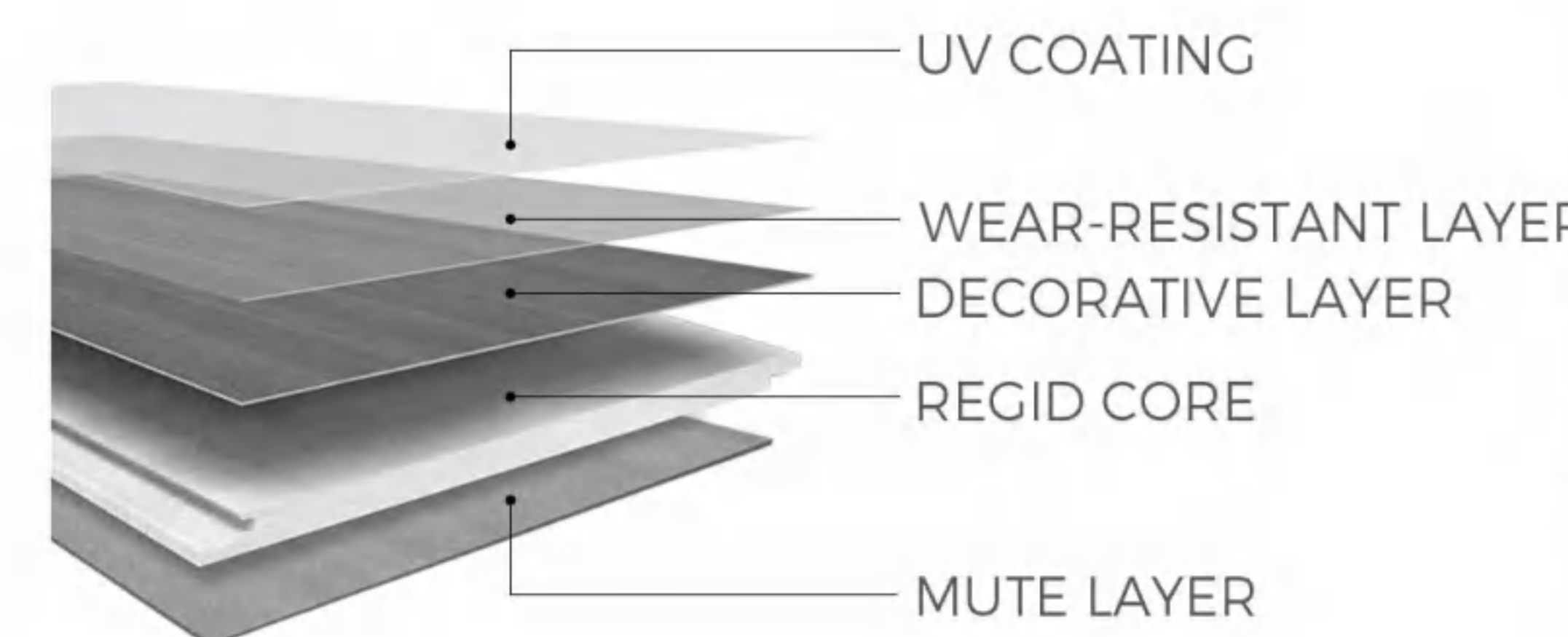


Unilin Click Installation



Adopting UNILIN locking system, SPC Flooring installation is easier and faster, flooring planks lay together without glue. Tight & even interlock technology avoids crash of edges and water leakage, protects for a lifetime of beauty. 4-side beveled edges are available to enhance three-dimensional feel and increase its realistic texture

SPC flooring environmental performance is much better than that of laminate flooring, no formaldehyde emission, its material is recyclable and environment. SPC flooring provides superior water & erosion resistance let you install especially in high moisture areas including bathrooms, kitchens, basement and laundry rooms, it is ideal choices for residential use. it is fire retardant and with high heat resistance compared with solid wood or laminated flooring.



Thickness	3.5, 3.8, 4, 4.5, 5, 5.5, 6, 6.5, 7, 8(mm)		
Wear Layer	0.3mm, 0.5mm, 0.7mm		
Dimensions	150*912mm(6''*36'')	183*1220mm(7''*48'')	230*1220mm(9''*48'')
Backing Layer	100% new material		
Edge Detail	EVA, IXPE, Cork, etc.		
Surface Treatment	Squared edge & Beveled edge available		
Surface Texture	UV Coating		
Installation	Wood Grain	Stone Pattern	Orange Peel
	Flat grain	Impact Grain	Hand-scraped Grain
	Waterproof	Strong Stability	Formaldehyde-Free
Application	Fireproof	Non-Slip	Varieties Design
	Easy Installation	Unilin Click	DIY installation
Application	Indoor area, Decoration material, Office, Hospital, Hotel, School, Shopping center, Household, Residential and Commercial etc.		