

COMPOSITE CLADDING

02

About

03

WPC

06

3D Wood Grain Series

Surface	08
Color Series	09
Fature	10
Case Show	11

12

Capped Composite Series

Surface	14
Color Series	15
Fature	16
Case Show	17

18

Conventional Composite Series

Surface	20
Color Series	21
Fature	22
Case Show	23

24

Installation Instructions

About



Founded in 2000, has been a well-recognized brand in global WPC market. With years of R&D focus on WPC production and design, occupies leading position among WPC manufacturers. manufacturing facility covers over 100,000 square feet, equipped with R&D lab, professional teams of technicians and designers, and certified by CE, ISO9001:2015, ISO14001:2015.

WPC is produced with recycled and FSC approved wood flour and waste plastic by an extrusion process. WPC is a versatile material that

combines the traditional appearance of timber with the durability and resilience of an engineered composite, attested by SGS and Intertek.

WPC is the ideal solution for outdoor life building, such as park square decking, homeyard Refreshment Bars, Walkway, Verandas, Promenades, balconies, Bridges, Conservatories, Patios, Pool Side, Railing, Fencing.....

About WPC

Wood Plastic Composite (WPC) is manufactured from a combination of 85% recycled and FSC certified HDPE, hard wood flour, with some performance-optimized additives (eg. anti-uv, anti-ageing) . With our patented extrusion technology to wrap the wood flour particles with HDPE perfectly, WPC keeps the natural impression of wood and rich colors of plastic.

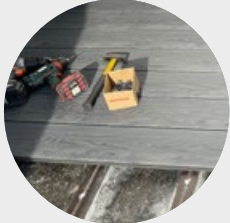
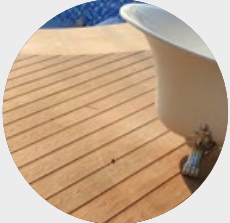
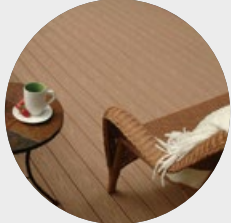
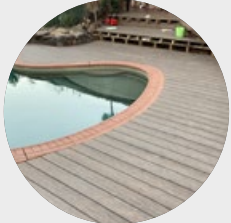


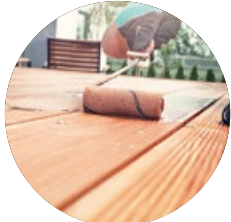




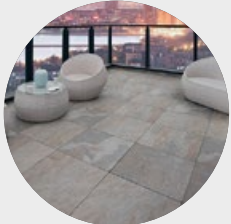
With years' efforts in R&D in uncapped WPC production techniques, we successfully introduced 3D Embossing and streaking coloring into its decking and cladding. COOWIN® WPC embraces outstanding properties like high strength, high stiffness, anti-acid, erosion-proof, non-distortion, formaldehyde excluded, easy to recycle, etc. And it can be

made into various profiles and mimic natural feature of timber. Meanwhile, those disadvantages of timber, like cracking, moth and weakness in durability, are well overcome by composite. Furthermore, the outstanding properties of WPC make it unnecessary to paint or maintain.

More than 60 types of WPC profiles from our company have been launched and introduced into market, and they are widely adopted in decking, railing, pavilion, bridge, tables and chairs, handrail, flower box and pallet etc. Till now WPC has been used in every corner of the world.

WPC CHARACTERISTICS

CHARACTERISTICS OF PLASTIC	CHARACTERISTICS OF WOOD	AND MORE.....
Weather-proof	Easy to Cut, Fix, and Glue	100% Recyclable
No Crack, No Split, No Warp, No Splinter	Easy to Tenon, Drill, and Nail	No Need to Paint Periodically
High Dimension Stability	Natural Feeling	Requiring Less Maintenance
Insect Resistance	/	Environmentally Friendly
Manufacture Feasibility of Various Profiles	Innocuous	Various Color Options

	DIY	Skin-friendly	Maintenance	Lifespan
WPC	 <p>DIY</p>	 <p>No Slippery, No Splinter, No Formaldehyde</p>	 <p>Low-maintenance</p>	 <p>Long Life Time</p>
WOOD	 <p>Carpentry Works</p>	 <p>Splinter, Crack</p>	 <p>Regular Painting</p>	 <p>1-3 Years</p>
STONE/CERAMIC	 <p>Concrete Works</p>	 <p>Hard, Rough, Slippery, Burning Hot</p>	 <p>Low-maintenance</p>	 <p>Long Life Time</p>

CLADDING

capped composite cladding incorporates 4-side capping technology, which offers better performance in water-proof, and superior resistance to sun, stains, mildew, and bacteria.

COOWIN® capped composite cladding, thanks to the exclusive formula of the coating, realizes a just-right compromise among the unwelcome plastic feel of the PVC material, unwanted color fading nature of traditional composite decking and annoying splinter and cracking of solid wood.

unique and diverse colors make the building full of vitality and imagination to meet the needs of different architectural styles.



3D Wood Grain Series



Capped Composite Series



Conventional Composite Series

• 3D Wood Grain Series

patented 3D wood grain surface with art color is advanced over traditional WPC cladding.

3D Embossing Cladding, better durability and wear resistance, perfectly mimics wood grain, and interprets the meaning of Wood Plastic Composite decking as the alternative to solid wood decking.

innovative dura-screw extrusion technology realizes a deeper interface diffusion and mechanical interlock of HDPE and wood flour particles, thereby ensures a higher strength and toughness of the finished product, and guarantees longer life, high screw holding power, and better resistance to moisture, rot, insects.

3D Wood Grain Series

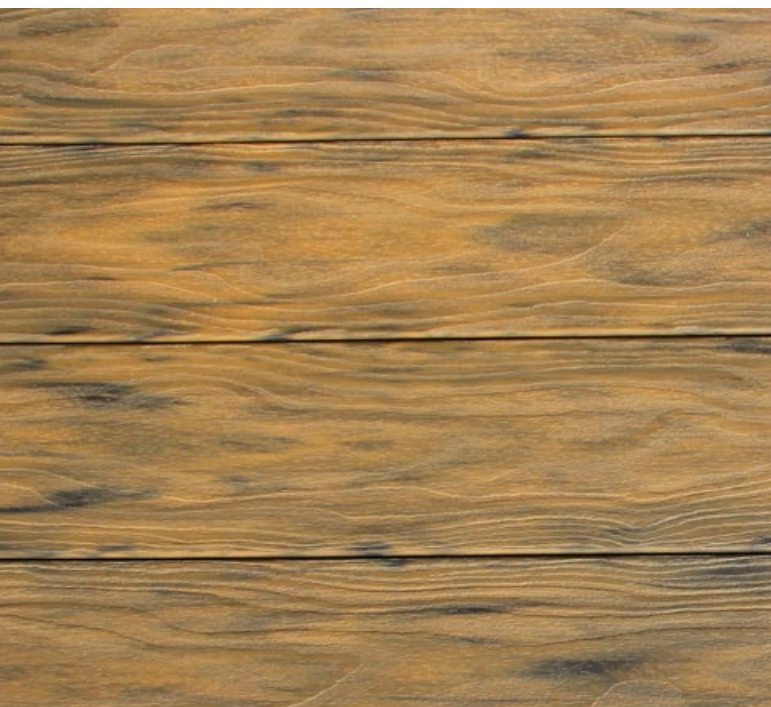
3D WOOD GRAIN SERIES

Series	Decking	Item Size	Sectional View	Structure
3D Wood Grain		CW-02 157*21mm		Hollow Profile

3D Wood Grain Series

Surface

- ◇ Inspired from natural real wood grain
- ◇ With embossing more than 1 mm in depth
- ◇ Up to three styles of wood grain for your choice



Modern



Classical



Fashion

Color Options

Art Color Series



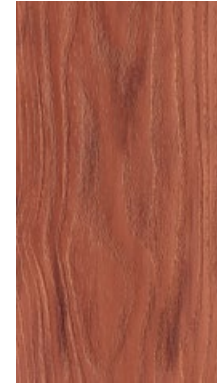
Light Gray Art



Cedar Art



Red Pine Art



Red Wood Art



Red Brown Art

Standard Color Series



Light Gray



Cedar



Red Pine



Red Wood



Red Brown



Coffee



Blue Gray

Feature



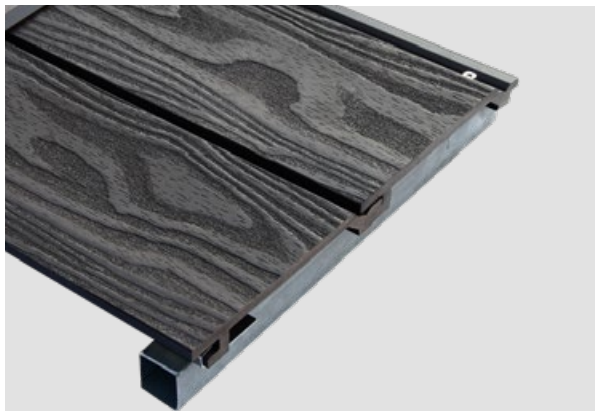
3D Wood Grain Surface Available

- ◆ Inspired from natural real wood grain
- ◆ With embossing more than 1 mm in depth
- ◆ Up to three styles of wood grain for your choice



Hollow Profile Design

- ◆ Excellent sound and heat insulation
- ◆ Cost-saving by 20%
- ◆ Endures well, with super long service life

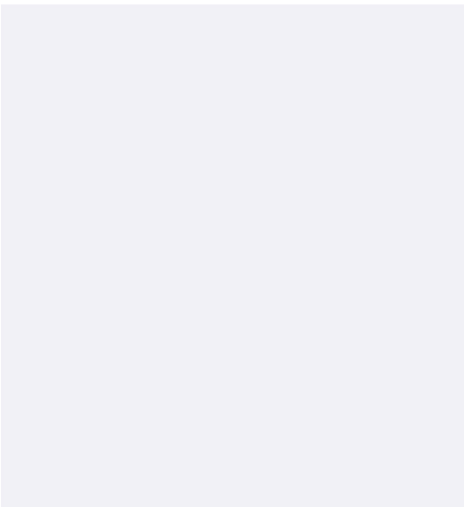


Easy Installation

- ◆ Quick to install, saving labor cost
- ◆ Compatible with multiple installation conditions
- ◆ Neat and sleek with fasteners concealed

Case Show

Case Show







• Capped Composite Series

Capped composite cladding incorporates 4-side capping technology, which offers better performance in water-proof, and superior resistance to sun, stains, mildew, and bacteria.

Capped composite cladding, thanks to the exclusive formula of the coating, realizes a just-right compromise among the unwelcome plastic feel of the PVC material, unwanted color fading nature of traditional composite decking and annoying splinter and cracking of solid wood.

Unique and diverse colors make the building full of vitality and imagination to meet the needs of different architectural styles.

Capped Composite Series

Series	Decking	Item Size	Sectional View	Structure
Capped		CO-07 157*21mm		Hollow Profile
Capped		CO-09 219*26mm		Great Wall

Capped Composite Series

Surface

- ◇ Inspired from natural real wood grain
- ◇ With embossing more than 1 mm in depth
- ◇ Up to three styles of wood grain for your choice



Aurora



Starshine



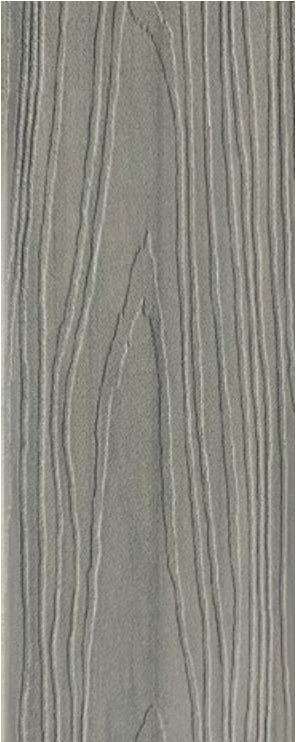
Brush



Brush Pro

Color Options

Color Options



Smoke Gray



Stone Gray



OAK



Dark Teak



Walnut

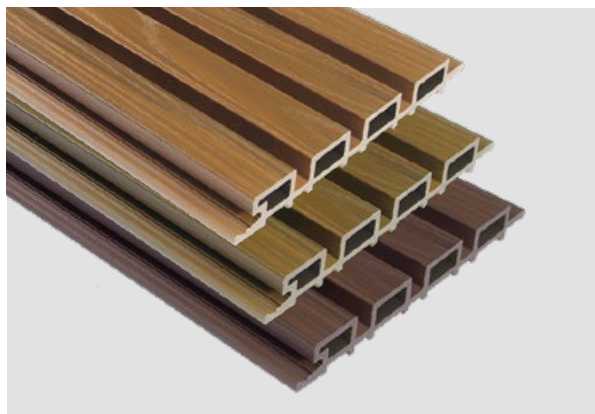
Feature

16



Wood Plastic Composite Core

- ◊ 50% wood fiber, 38% HDPE, 12% additives
- ◊ Large bearing capacity,
- ◊ Environmental friendly, 100% recyclable



Hollow Profile Design

- ◊ Excellent sound and heat insulation
- ◊ Cost-saving by 20%
- ◊ Endures well, with super long service life

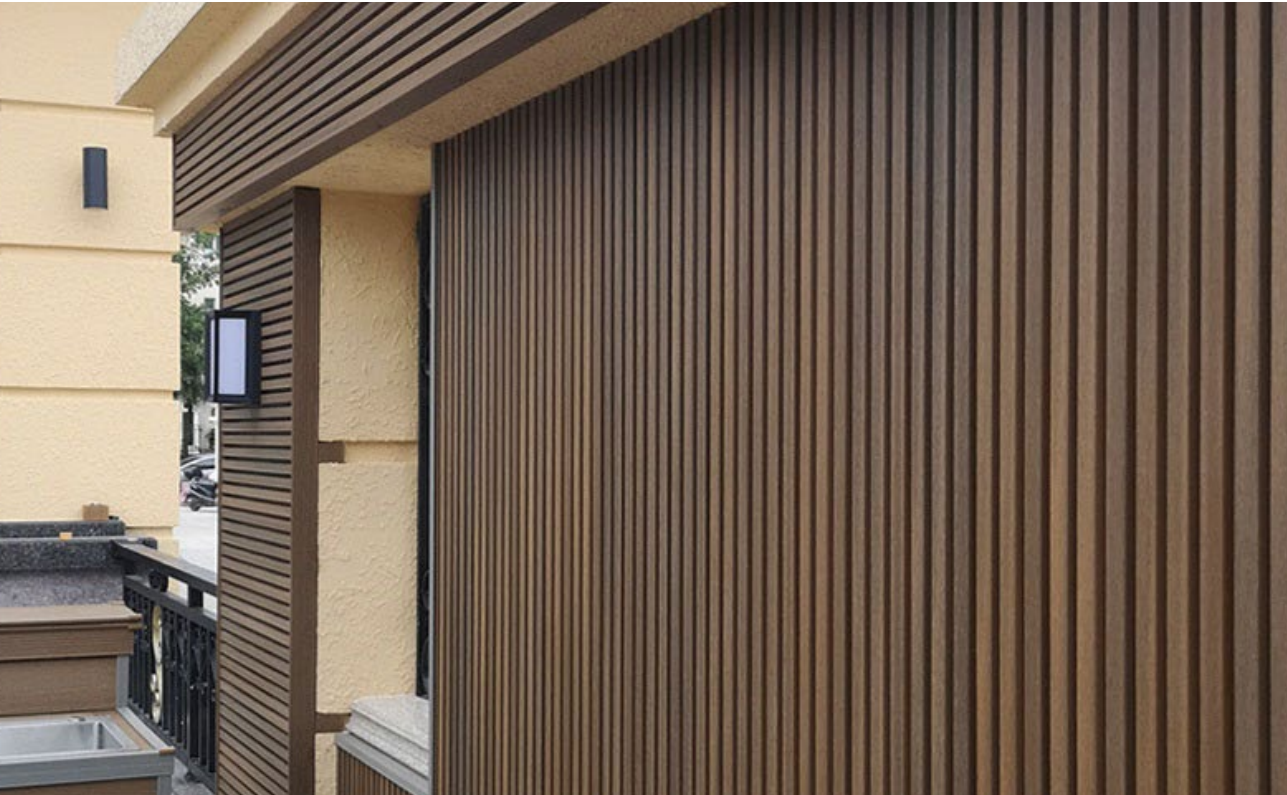


Easy Installation

- ◊ Quick to install, saving labor cost
- ◊ Compatible with multiple installation conditions
- ◊ Neat and sleek with fasteners concealed

Case Show

case show







CLADDING

• Conventional Composite Series

- Cladding, with interlocking assembly design, ensures no water leaks into the building structure.
- Cladding, with hollow profile design, is ideal for thermal insulation, sound proof and noise barrier.
- Cladding, with innovated material blending production process, realizes contemporary design with rich, vivid colors, combined with natural grain textures.
- Cladding, made from wood plastic composite, brings superior wall cladding with features of anti-aging, superior weather resistance, longer life, thereby making the building look fresh and natural.

Conventional Composite Series

CONVENTIONAL COMPOSITE SERIES

Series	Decking	Item Size	Sectional View	Structure
Sanding		TF-04W 157*21mm		Hollow Profile
Sanding		CO-09B 219*26mm		Great Wall

Conventional Composite Series

Surface

- ◇ Sanding surface, Simply styled
- ◇ Up to 12 colors options available
- ◇ Fits in well with a variety of decor styles



Color Options

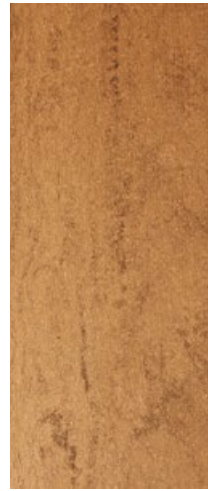
Color Options



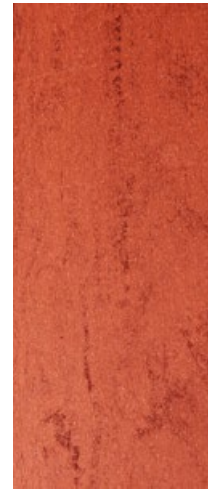
Light Gray Art



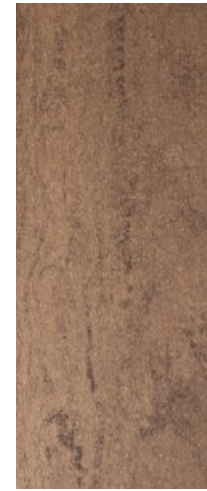
Cedar Art



Red Pine Art



Red Wood Art



Red Brown Art



Light Gray



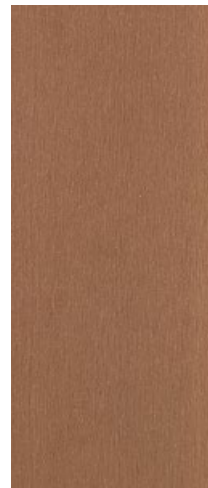
Cedar



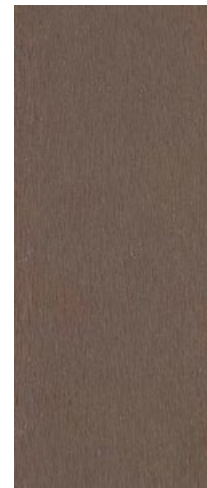
Red Pine



Red Wood



Red Brown



Coffee

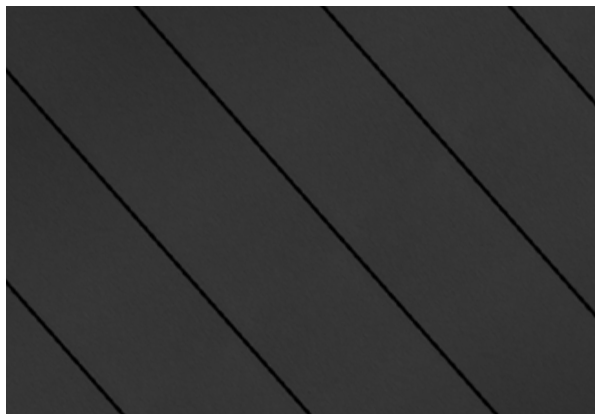


Blue Gray



Feature

GALVANIZING



Excellent Performance

- ◆ Made with well-developed formulas and techniques
- ◆ Looks and feels just like real wood
- ◆ Highly resistant to mildew, scratch, weathering, and moisture



Hollow Square Profile

- ◆ Large bearing capacity
- ◆ Cost-saving by 20%
- ◆ Endures well, with super long service life



Easy Installation

- ◆ Quick to install, saving labor cost
- ◆ Compatible with multiple installation conditions
- ◆ Neat and sleek with fasteners concealed

Case Show

Case Show



Installation Instructions (For CO-07/CW-02/TF-04W)



Circular Saw



Tape Measure



Power Drill



Level



Impact Drill



Joist



SS410 Screw



Color-Matched Screw



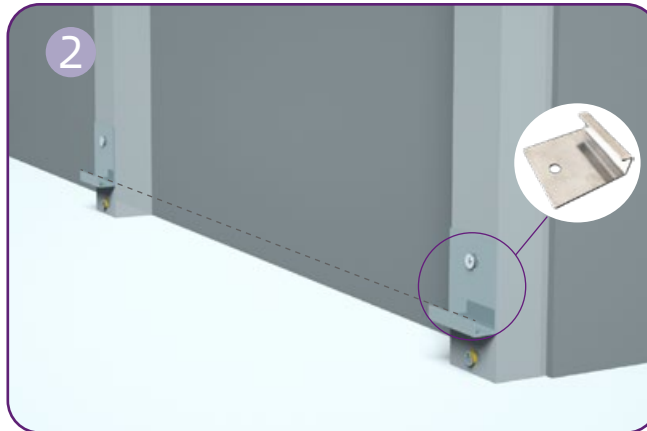
Ribbed Anchor



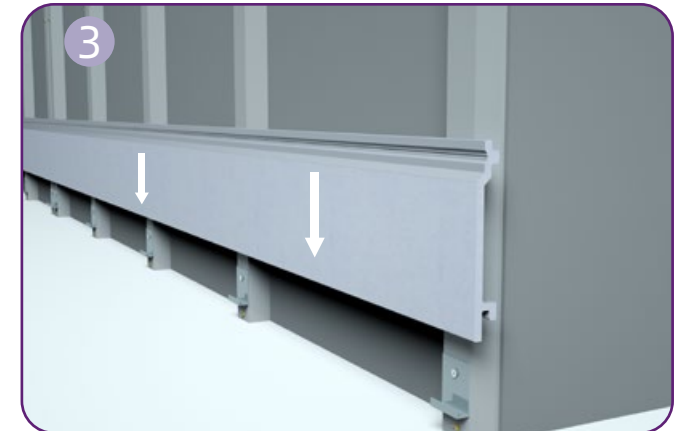
Start Clip



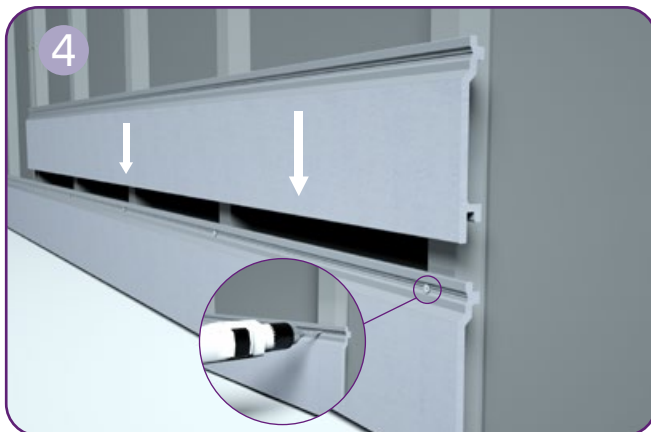
Fix joists to the wall at an interval of 500 mm with anchors. The spacing between two adjacent joists on-center should not exceed 450 mm.



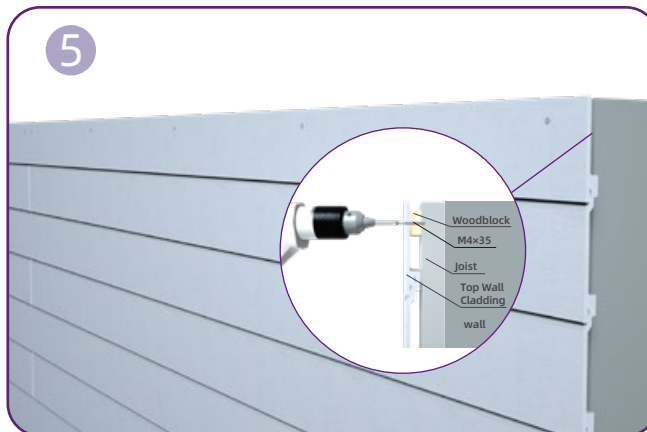
Fix start clips to joists with screws. Make sure that the start clips on each joist are in a straight horizontal line.



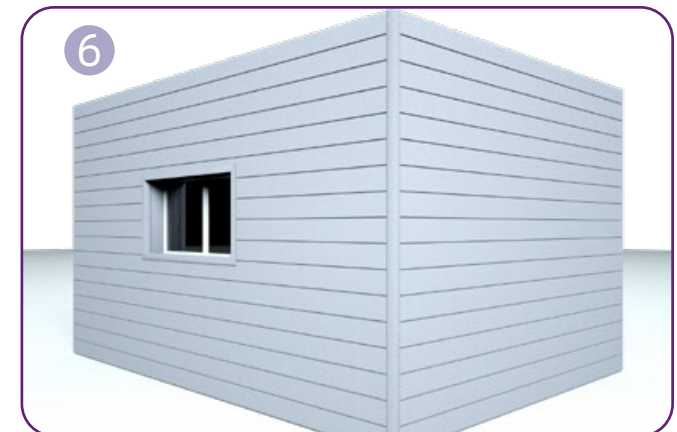
Fit the first row of cladding boards into the start clips.



Fix the first row of cladding boards to the joists with screws seated at the tongue. Put into place the second row of cladding boards. The tongues of the first row should fit into the grooves of the second row.



When it comes to the top of the wall, fix wood blocks of a suitable thickness to the top of the joists. Rip the cladding boards to a suitable width, then fix it to the woodblocks and joists with colored screws.



Cut the L corner to a suitable length, install the L-corner with colored screws. Continue and finish the installation in the same manner.

Installation Instructions (For CO-09/CO-09B)



Chainsaw



Tape Measure



Power Drill



Level



Impact Drill



Joist



SS410 Screw



Color-Matched Screw



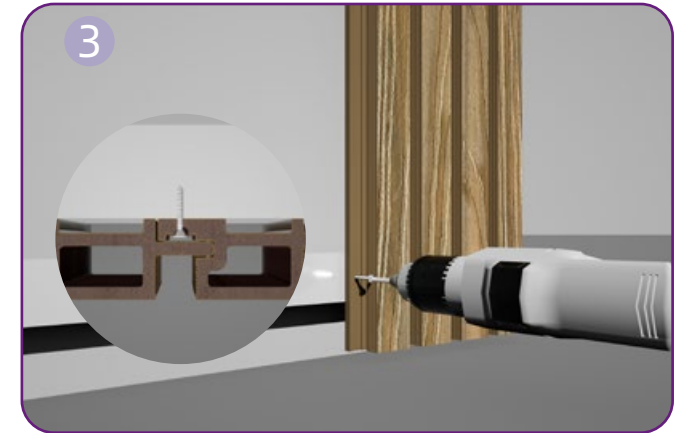
Ribbed Anchor



First, fix the joists at a 450 mm interval to the wall with expansion screws. The spacing between two adjacent screws should be 500 mm.



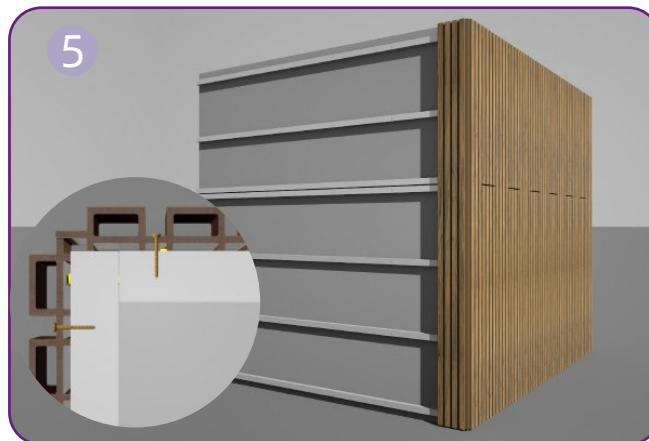
Fix the first piece of wall cladding board on the joists with colored screws. Note that the screws should be installed in the slot of the tongue.



Secure the cladding board completely by using self-drilling screws to fix it to the joists. The screws should be installed in the groove of the cladding.



Join the second piece of cladding board to the first one. Fix it to the joists with self-drilling screws.



To properly finish the corner, the joists are to be flush with each other respectively and fix them with screws.



Finish the installation by getting the rest installed in the same manner.